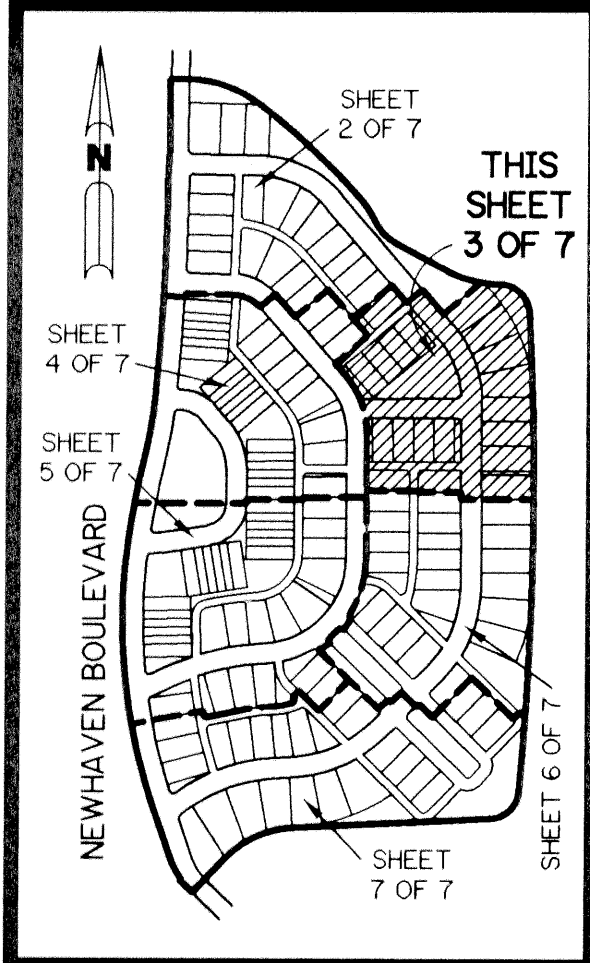


# NEWHAVEN - 7B - PHASE 1 AT ABACOA

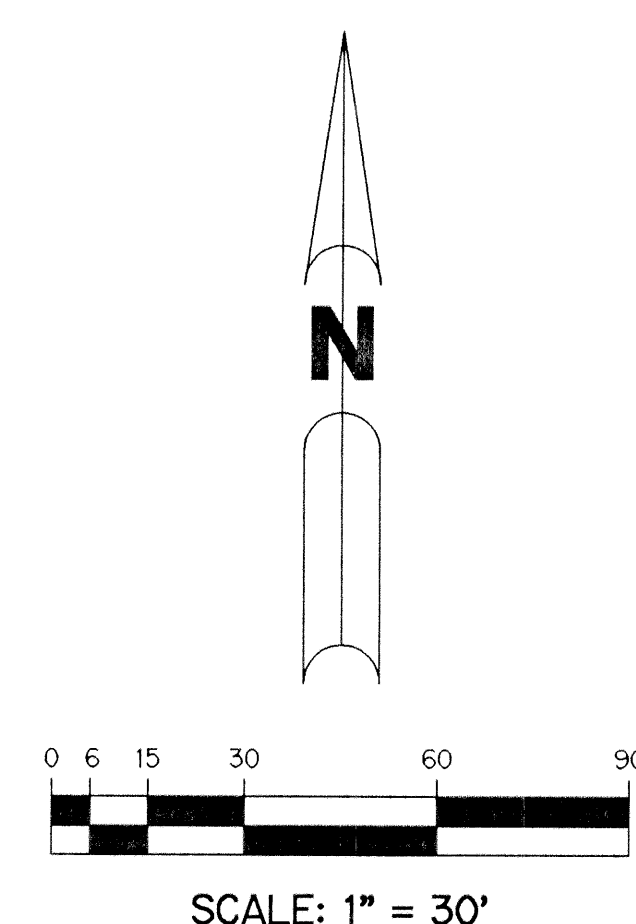
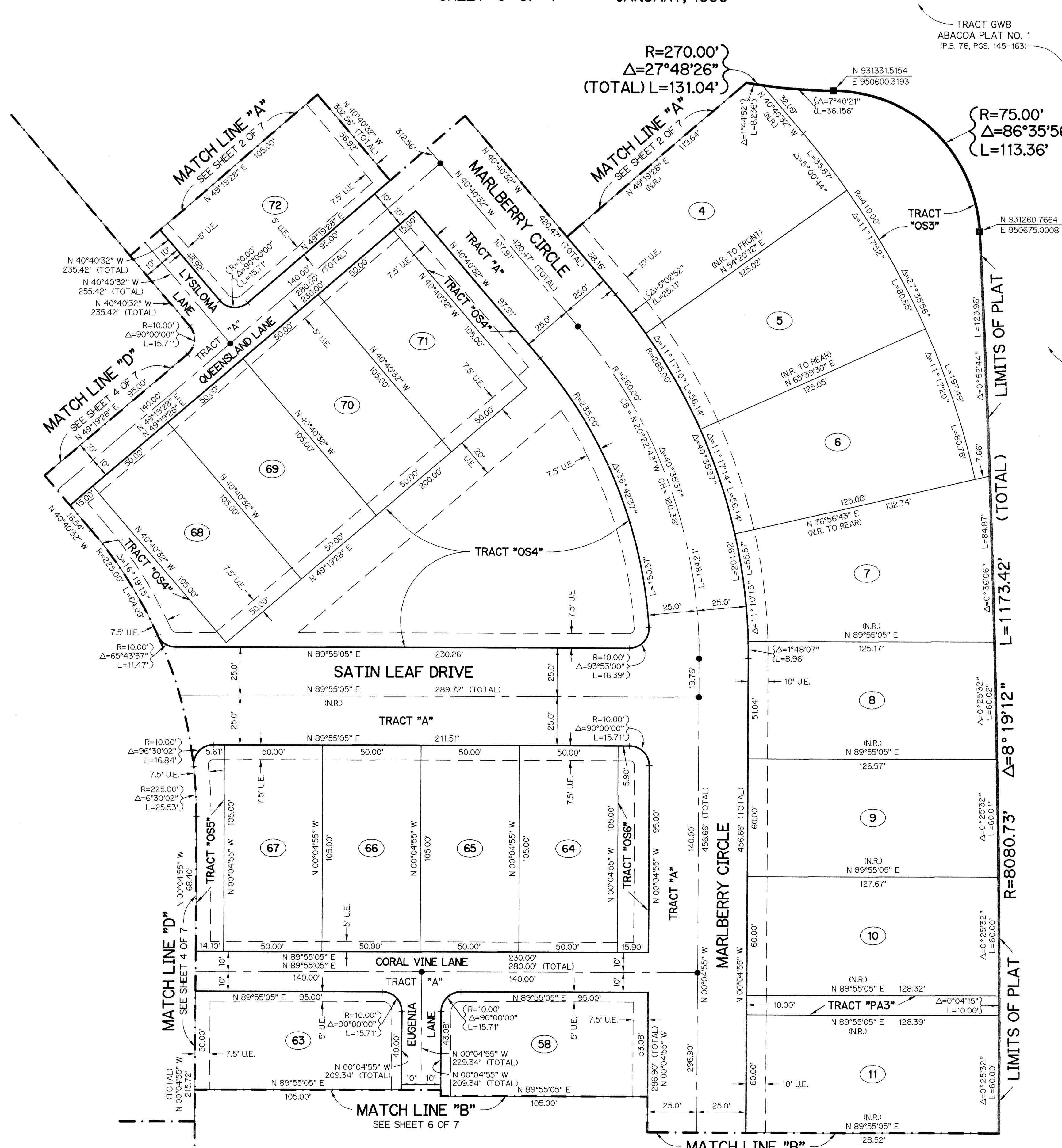
BEING A REPLAT OF A PORTION OF TRACT RN7B ACCORDING TO THE PLAT OF ABACOA PLAT NO. 1, AS RECORDED IN PLAT BOOK 78, PAGES 145 THROUGH 163, INCLUSIVE, OF THE PUBLIC RECORDS OF PALM BEACH COUNTY, FLORIDA. LYING IN SECTION 24, TOWNSHIP 41 SOUTH, RANGE 42 EAST.

SHEET 3 OF 7 JANUARY, 1999



KEY MAP  
N.T.S.

TRACT	ACREAGE	LAND USE	TRACT	ACREAGE	LAND USE
LOT 1	0.225 AC.	REZ	LOT 98	0.155 AC.	REZ
LOT 2	0.172 AC.	REZ	LOT 99	0.133 AC.	REZ
LOT 3	0.168 AC.	REZ	LOT 100	0.121 AC.	REZ
LOT 4	0.197 AC.	REZ	LOT 101	0.121 AC.	REZ
LOT 5	0.197 AC.	REZ	LOT 102	0.121 AC.	REZ
LOT 6	0.197 AC.	REZ	LOT 103	0.121 AC.	REZ
LOT 7	0.205 AC.	REZ	LOT 104	0.182 AC.	REZ
LOT 8	0.173 AC.	REZ	LOT 105	0.179 AC.	REZ
LOT 9	0.175 AC.	REZ	LOT 106	0.137 AC.	REZ
LOT 10	0.176 AC.	REZ	LOT 107	0.138 AC.	REZ
LOT 11	0.177 AC.	REZ	LOT 108	0.127 AC.	REZ
LOT 12	0.177 AC.	REZ	LOT 109	0.157 AC.	REZ
LOT 13	0.176 AC.	REZ	LOT 110	0.089 AC.	REZ
LOT 14	0.175 AC.	REZ	LOT 111	0.056 AC.	REZ
LOT 15	0.182 AC.	REZ	LOT 112	0.056 AC.	REZ
LOT 16	0.194 AC.	REZ	LOT 113	0.056 AC.	REZ
LOT 17	0.210 AC.	REZ	LOT 114	0.056 AC.	REZ
LOT 18	0.115 AC.	REZ	LOT 115	0.088 AC.	REZ
LOT 19	0.121 AC.	REZ	LOT 116	0.087 AC.	REZ
LOT 20	0.121 AC.	REZ	LOT 117	0.055 AC.	REZ
LOT 21	0.127 AC.	REZ	LOT 118	0.055 AC.	REZ
LOT 22	0.113 AC.	REZ	LOT 119	0.055 AC.	REZ
LOT 23	0.121 AC.	REZ	LOT 120	0.088 AC.	REZ
LOT 24	0.121 AC.	REZ	LOT 121	0.087 AC.	REZ
LOT 25	0.132 AC.	REZ	LOT 122	0.088 AC.	REZ
LOT 26	0.227 AC.	REZ	LOT 123	0.055 AC.	REZ
LOT 27	0.183 AC.	REZ	LOT 124	0.055 AC.	REZ
LOT 28	0.186 AC.	REZ	LOT 125	0.055 AC.	REZ
LOT 29	0.200 AC.	REZ	LOT 126	0.055 AC.	REZ
LOT 30	0.212 AC.	REZ	LOT 127	0.088 AC.	REZ
LOT 31	0.252 AC.	REZ	LOT 128	0.088 AC.	REZ
LOT 32	0.137 AC.	REZ	LOT 129	0.055 AC.	REZ
LOT 33	0.105 AC.	REZ	LOT 130	0.055 AC.	REZ
LOT 34	0.123 AC.	REZ	LOT 131	0.055 AC.	REZ
LOT 35	0.129 AC.	REZ	LOT 132	0.055 AC.	REZ
LOT 36	0.123 AC.	REZ	LOT 133	0.088 AC.	REZ
LOT 37	0.129 AC.	REZ	LOT 134	0.087 AC.	REZ
LOT 38	0.129 AC.	REZ	LOT 135	0.055 AC.	REZ
LOT 39	0.129 AC.	REZ	LOT 136	0.055 AC.	REZ
LOT 40	0.129 AC.	REZ	LOT 137	0.055 AC.	REZ
LOT 41	0.135 AC.	REZ	LOT 138	0.055 AC.	REZ
LOT 42	0.137 AC.	REZ	LOT 139	0.087 AC.	REZ
LOT 43	0.125 AC.	REZ	LOT 140	0.087 AC.	REZ
LOT 44	0.121 AC.	REZ	LOT 141	0.055 AC.	REZ
LOT 45	0.121 AC.	REZ	LOT 142	0.055 AC.	REZ
LOT 46	0.121 AC.	REZ	LOT 143	0.055 AC.	REZ
LOT 47	0.142 AC.	REZ	LOT 144	0.055 AC.	REZ
LOT 48	0.145 AC.	REZ	LOT 145	0.087 AC.	REZ
LOT 49	0.121 AC.	REZ			
LOT 50	0.121 AC.	REZ			
LOT 51	0.121 AC.	REZ			
LOT 52	0.165 AC.	REZ			
LOT 53	0.124 AC.	REZ			
LOT 54	0.121 AC.	REZ			
LOT 55	0.096 AC.	REZ			
LOT 56	0.121 AC.	REZ			
LOT 57	0.121 AC.	REZ			
LOT 58	0.127 AC.	REZ			
LOT 59	0.121 AC.	REZ			
LOT 60	0.121 AC.	REZ			
LOT 61	0.121 AC.	REZ			
LOT 62	0.121 AC.	REZ			
LOT 63	0.120 AC.	REZ			
LOT 64	0.121 AC.	REZ			
LOT 65	0.121 AC.	REZ			
LOT 66	0.121 AC.	REZ			
LOT 67	0.121 AC.	REZ			
LOT 68	0.121 AC.	REZ			
LOT 69	0.121 AC.	REZ			
LOT 70	0.121 AC.	REZ			
LOT 71	0.121 AC.	REZ			
LOT 72	0.137 AC.	REZ			
LOT 73	0.121 AC.	REZ			
LOT 74	0.121 AC.	REZ			
LOT 75	0.096 AC.	REZ			
LOT 76	0.141 AC.	REZ			
LOT 77	0.149 AC.	REZ			
LOT 78	0.127 AC.	REZ			
LOT 79	0.179 AC.	REZ			
LOT 80	0.132 AC.	REZ			
LOT 81	0.118 AC.	REZ			
LOT 82	0.126 AC.	REZ			
LOT 83	0.126 AC.	REZ			
LOT 84	0.101 AC.	REZ			
LOT 85	0.134 AC.	REZ			
LOT 86	0.164 AC.	REZ			
LOT 87	0.170 AC.	REZ			
LOT 88	0.121 AC.	REZ			
LOT 89	0.104 AC.	REZ			
LOT 90	0.121 AC.	REZ			
LOT 91	0.121 AC.	REZ			
LOT 92	0.120 AC.	REZ			
LOT 93	0.120 AC.	REZ			
LOT 94	0.121 AC.	REZ			
LOT 95	0.121 AC.	REZ			
LOT 96	0.096 AC.	REZ			
LOT 97	0.150 AC.	REZ			



- LEGEND:**
- - SET PERMANENT REFERENCE MONUMENT, PSM #4213
  - - SET PERMANENT CONTROL POINT, PSM #4213
  - Δ - DELTA ANGLE
  - BT - BUFFER TRACT
  - CL - CENTERLINE
  - D.B. - DEED BOOK
  - D.E. - DRAINAGE EASEMENT
  - D.W.E. - DRIVEWAY EASEMENT
  - L - ARC LENGTH
  - L.A.E. - LIMITED ACCESS EASEMENT
  - L.M.A.E. - LAKE MAINTENANCE ACCESS EASEMENT
  - L.M.E. - LAKE MAINTENANCE EASEMENT
  - P.B. - PLAT BOOK
  - N.R. - NOT RADIAL
  - N.T.S. - NOT TO SCALE
  - OS - OPEN SPACE TRACT
  - O.R.B. - OFFICIAL RECORD BOOK
  - PA - PEDESTRIAN ACCESS TRACT
  - P.B. - PLAT BOOK
  - P.S. - PAGES
  - P.S.M. - PROFESSIONAL SURVEYOR AND MAPPER
  - R - RADIUS
  - R/W - RIGHT-OF-WAY
  - S.T. - SURVEY TIE
  - U.E. - UTILITY EASEMENT

**NOTE:**  
 COORDINATES SHOWN ARE GRID COORDINATES  
 DATUM = NAD 83 (1990 ADJUSTMENT)  
 ZONE = FLORIDA EAST ZONE  
 LINEAR UNIT = U.S. SURVEY FEET  
 COORDINATE SYSTEM 1983 STATE PLANE  
 TRANSVERSE MERCATOR PROJECTION  
 ALL DISTANCES ARE GROUND  
 SCALE FACTOR = 1.0000077  
 PLAT BEARING = GRID BEARING  
 NO ROTATION (PLAT = GRID)

THIS INSTRUMENT PREPARED BY  
 PERRY C. WHITE, P.S.M. 4213, STATE OF FLORIDA  
 LAWSON, NOBLE AND WEBB, INC.  
 ENGINEERS PLANNERS SURVEYORS  
 WEST PALM BEACH, FLORIDA  
 LB# 6674